

# Find the Missing Letter

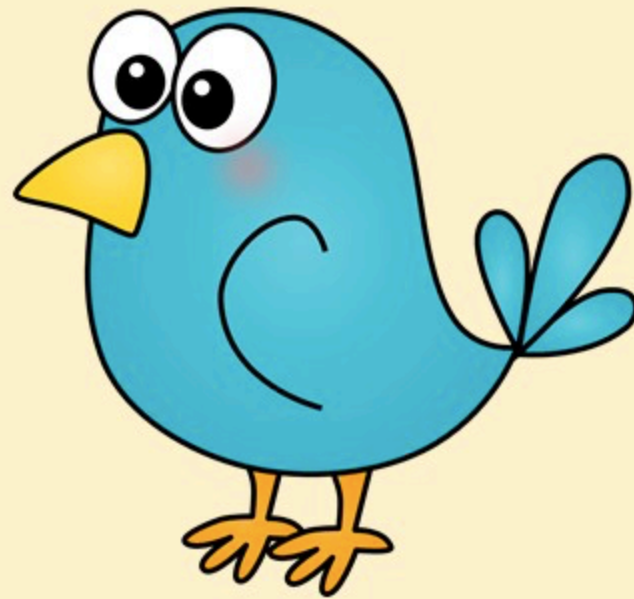
a phonics practice game

ar, er, ir, or, ur

**Click to start.**

Created by The Curriculum Corner

b \_ r d

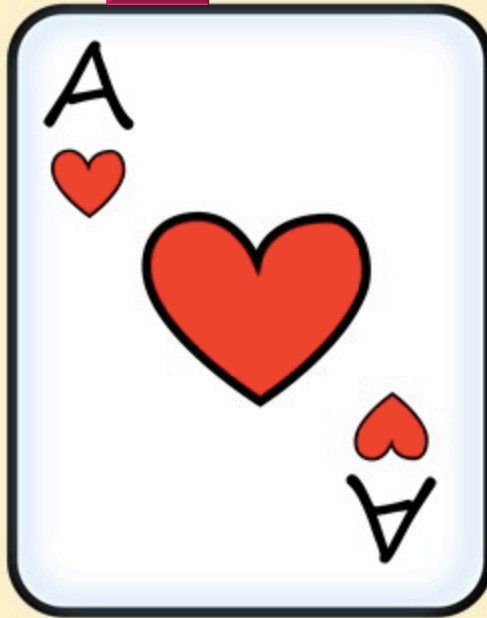


a

e

i

c r d



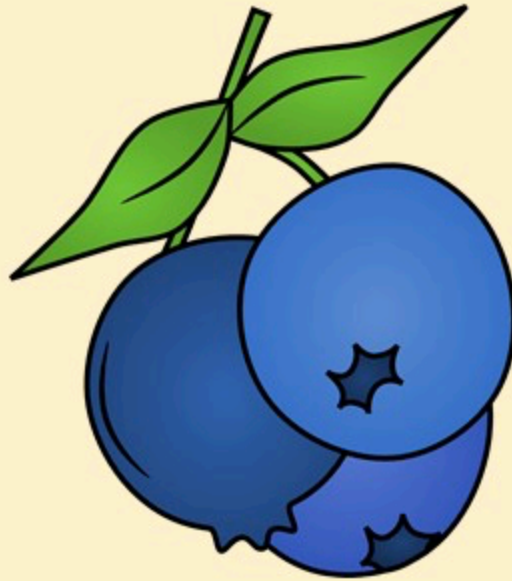
a

e

i



b l u e b \_ r r y



a

e

i



c \_ r r o t



a

e

i

b l e n d \_ r



a

e

i

f a r m \_ r



a

e

i



clov\_r

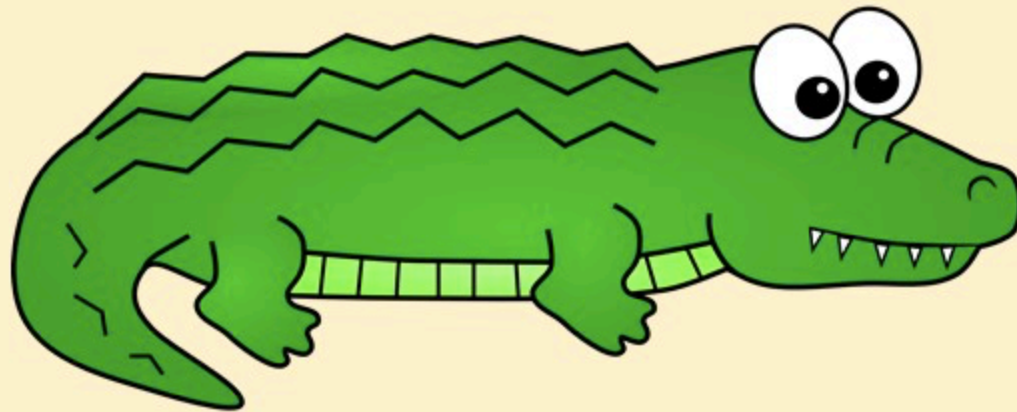


a

e

i

a l l i g a t \_ r



a

o

u

f l o w \_ r



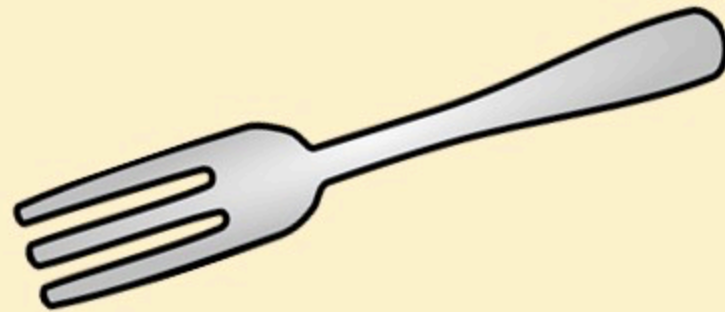
a

e

i



f \_ r k



a

o

u

g \_ r b a g e



a

e

i

p l u m b \_ r



a

e

i



g \_ r a f f e



a

e

i

f e a t h \_ r



a

e

i

g u i t \_ r



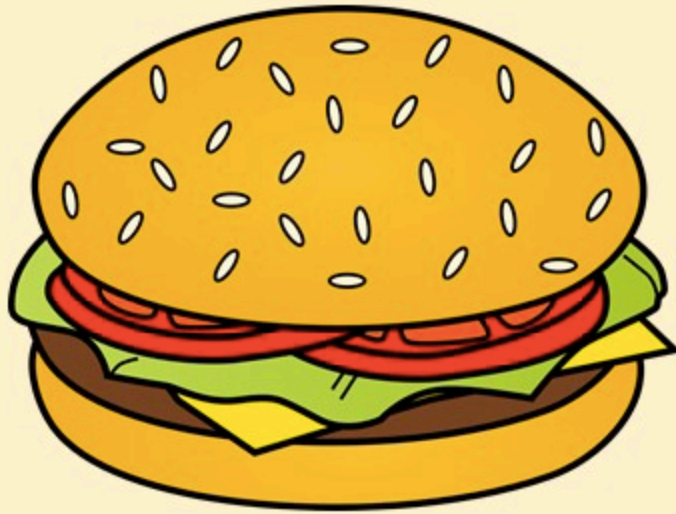
a

e

i



h a m b u r g \_ r

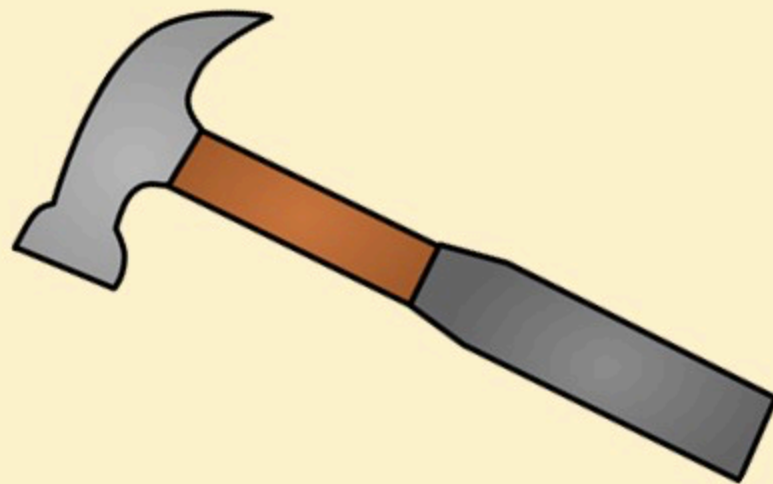


a

e

i

h a m m \_ r



a

e

i

h \_ r s e



a

o

u



c \_ r

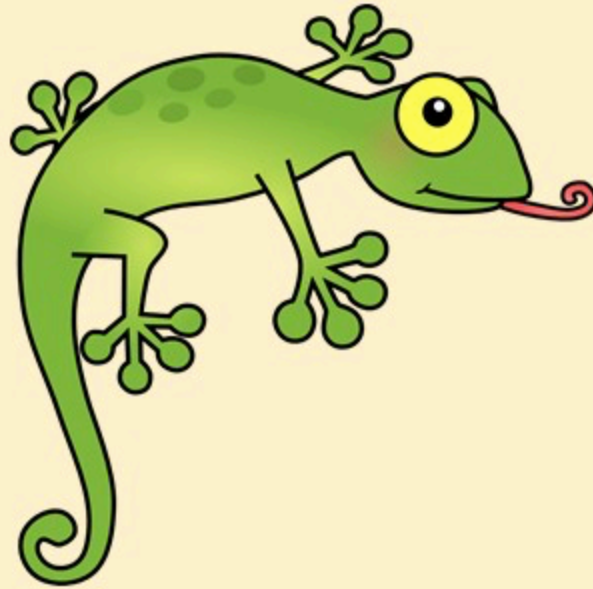


a

e

i

l i z z \_ r d



a

e

i

s c o o t \_ r



a

e

i



j \_ r



a

e

i

s h \_ r t



a

e

i

p \_ r s e



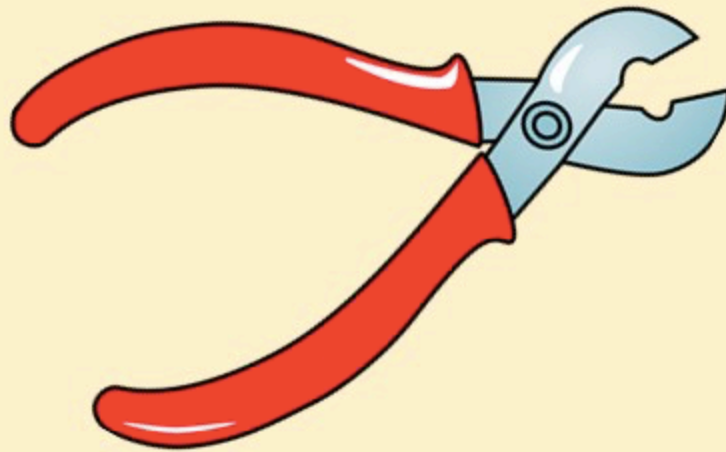
i

o

u



p l i \_ r s



a

e

i

p o p c \_ r n



a

o

u

s c \_ r f



a

e

i



s k \_ r t

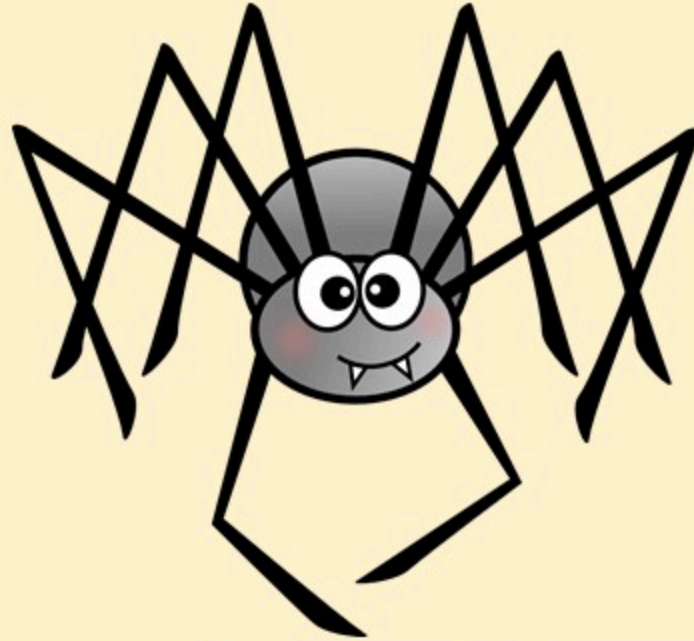


a

e

i

s p i d \_ r



e

o

u

s t \_ r



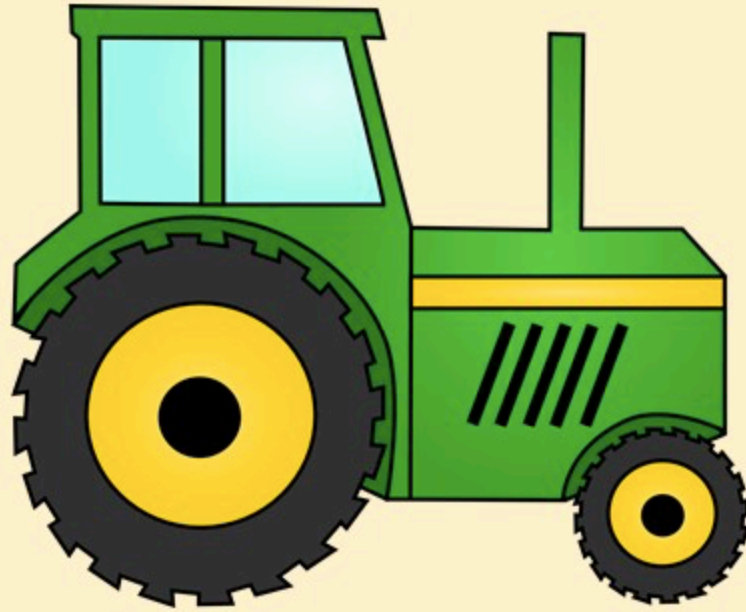
a

e

i



tract\_r



a

o

u

t \_ r n



i

o

u

treasure



i

o

u



s t \_ r m



a

o

u

The background of the entire page is a repeating pattern of colorful stars in shades of pink, orange, teal, and brown. In the center, there is a large, light blue rounded rectangle with a thin dark blue border. Inside this rectangle, the text "Way to Go!" is written in a large, pink, 3D-style font.

Way to Go!

[Click here to go to play again.](#)